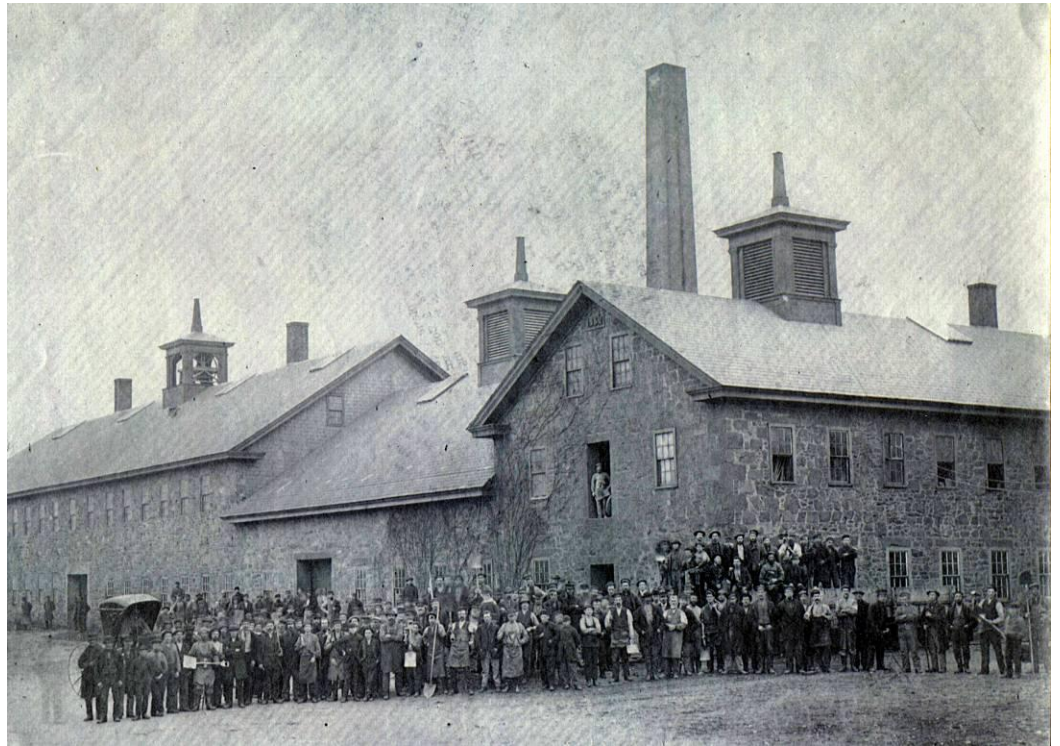


The Ames Shovel Works and North Easton Village –

A joint tour of the Vernacular Architecture Forum New England Chapter and the Southern New England Chapter of the Society for Industrial Archeology



Hosted by Greg Galer and Ed Hands

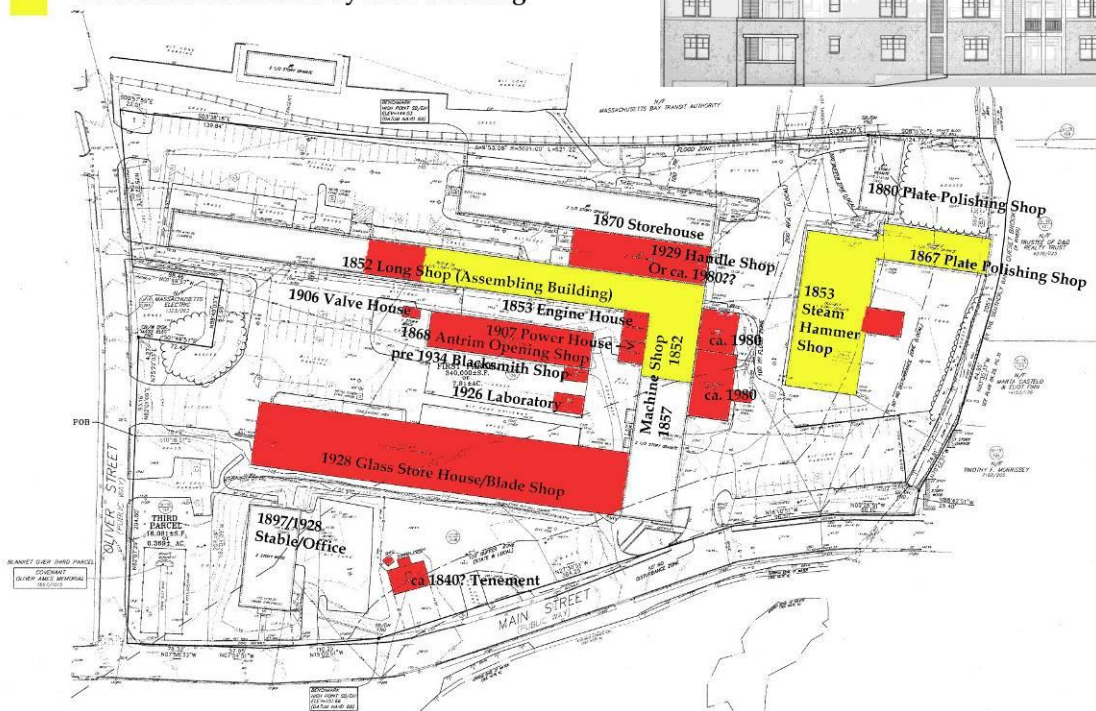
August 18, 2012



Proposed Development, 2007



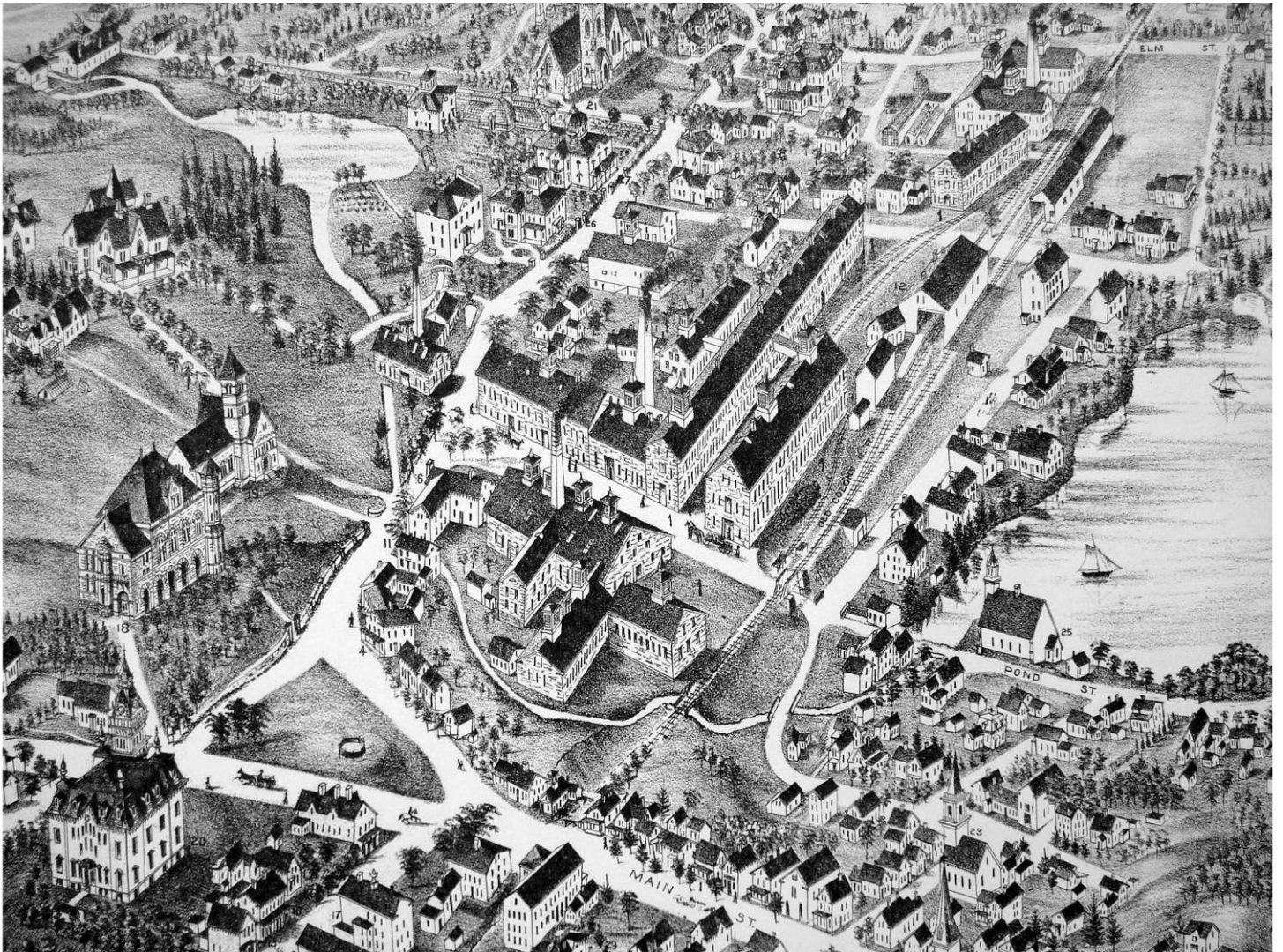
-  = Proposed Demolition
-  = Effective Demolition by over-building



Current Beacon Communities Development

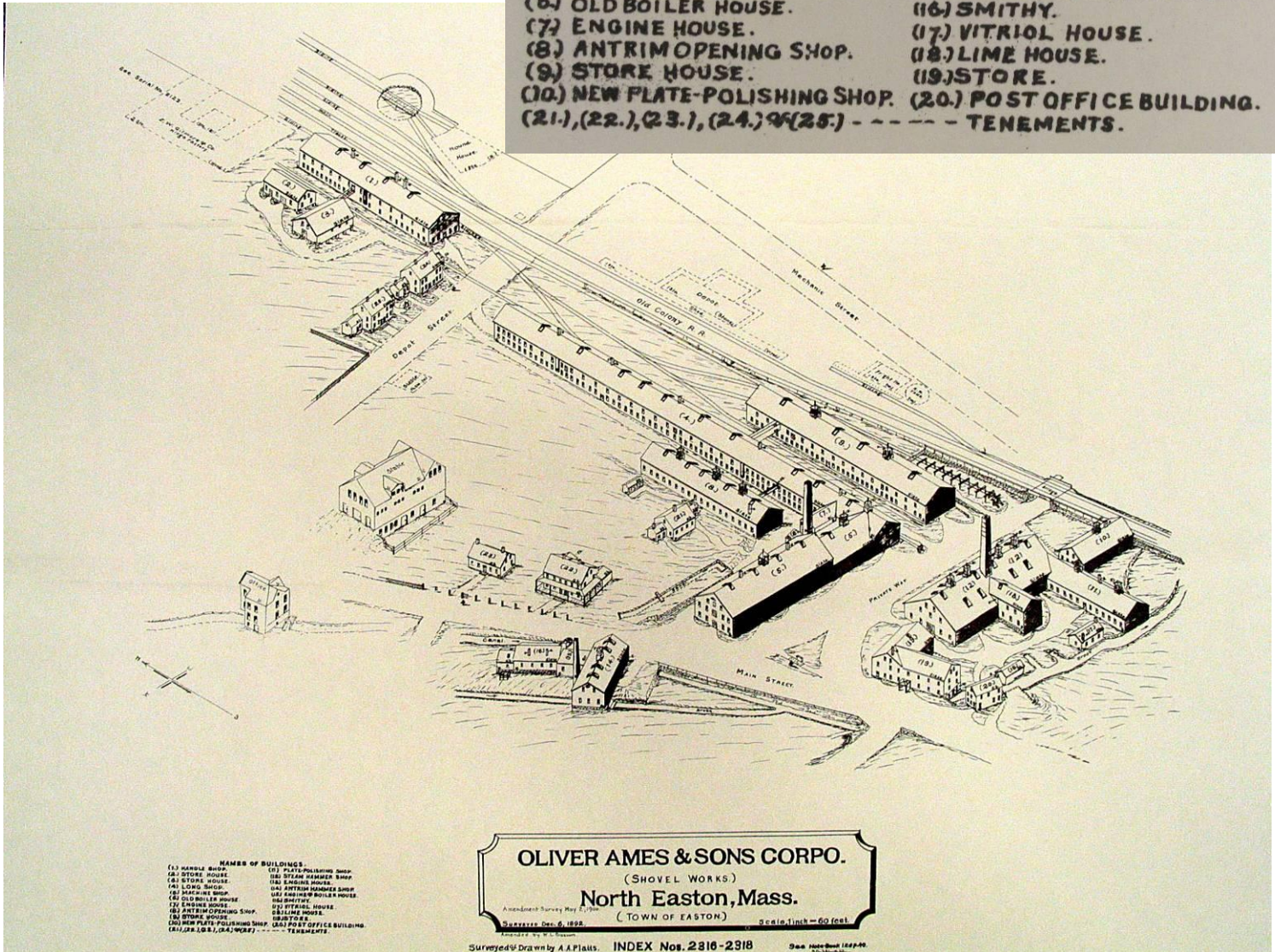


1881

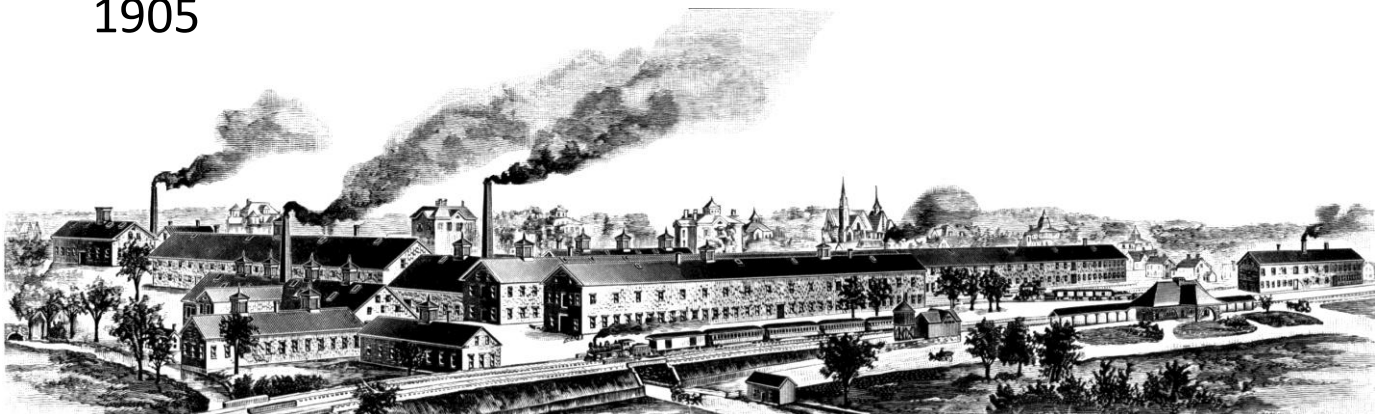


1902

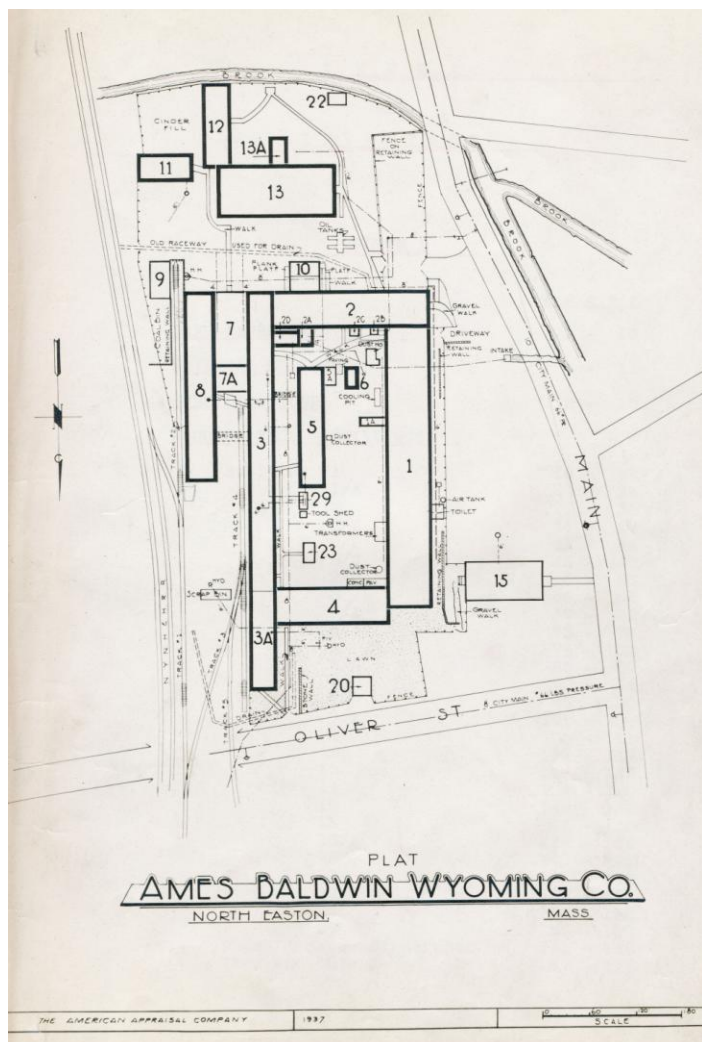
- NAMES OF BUILDINGS.**
- | | |
|-------------------------------------|-----------------------------|
| (1.) HANDLE SHOP. | (11) PLATE-POLISHING SHOP. |
| (2.) STORE HOUSE. | (12) STEAM HAMMER SHOP. |
| (3.) STORE HOUSE. | (13) ENGINE HOUSE. |
| (4.) LONG SHOP. | (14) ANTRIM HAMMER SHOP. |
| (5.) MACHINE SHOP. | (15) ENGINE & BOILER HOUSE. |
| (6.) OLD BOILER HOUSE. | (16) SMITHY. |
| (7.) ENGINE HOUSE. | (17) VITRIOL HOUSE. |
| (8.) ANTRIM OPENING SHOP. | (18) LIME HOUSE. |
| (9.) STORE HOUSE. | (19) STORE. |
| (10.) NEW PLATE-POLISHING SHOP. | (20.) POST OFFICE BUILDING. |
| (21.), (22.), (23.), (24.), & (25.) | ----- TENEMENTS. |



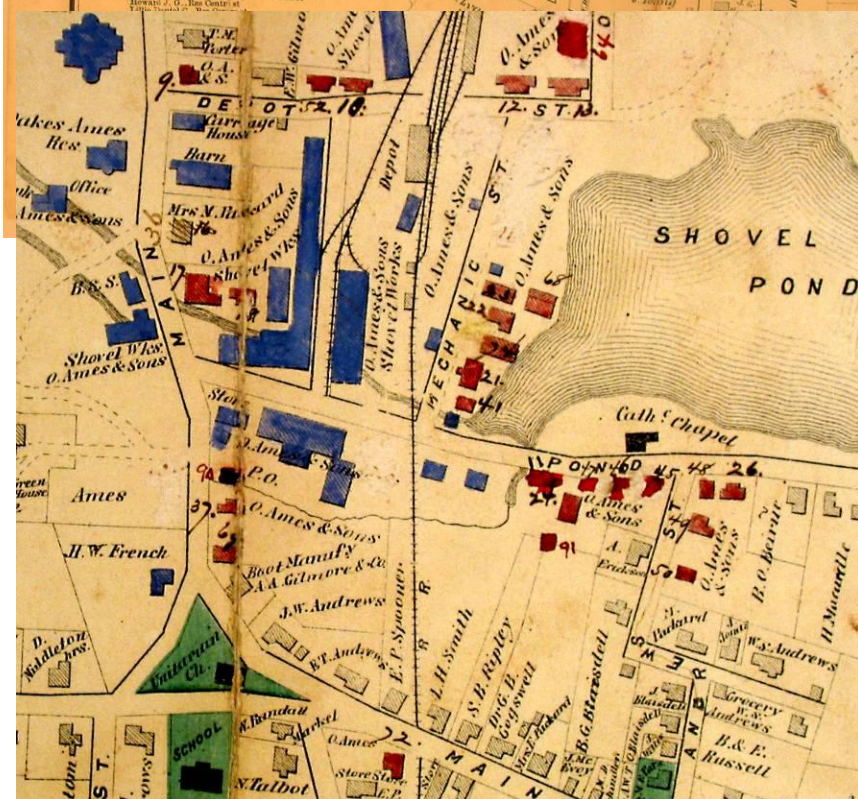
1905



1937



Building	Date of Construction	Use in 1937
1	1929	Blade Shop
1A	1929	Pickling House
2	1870	Assembly Shop
2A	1870	Fire Pump House
2B	1929	Valve House
2C	---	Fuel Oil Pump House
2D	1870	Toilet Room
3	1852	Completion Shop, Shipping/Storage Room
3A	1852	Steel Storage
4	1930	Shearing Department
5	1868	Machine Shop, Carpenter Electric Shops
5A	pre 1934	Blacksmith Shop
6	1926	Laboratory
7	1929	Handle Shop & Handle Drying Room
7A	pre 1935	Handle Drying Room
8	1870	Handle Shop
9	1929	Boiler House
10	1927	Storage
11	1880	Storage
12	1867	Storage
13	1853	Storage
13A	1853	Storage
15	1897-1928	Office
20	pre 1925	Garage
22	pre 1925	Storage Shed
23	pre 1935	Lacquer storage & mixing
29	1906	Dry Valve House



Tenement Map,
(1871 base map)



